



Tork Elevation T26 High Capacity Bath Tissue Dispenser



Table of Contents

General Description & Replacement parts

Product Specifications, Part locations/descriptions	2
Replacing the lock	3
Replacing the hood	4

Operation, Maintenance & Troubleshooting

Filling/re-filling the dispenser	5
Maintenance, trouble shooting, contacting SCA	7

Additional mounting information

Mounting Template.....	8
Mounting hole dimensions.....	9
ADAAG Guidelines	10



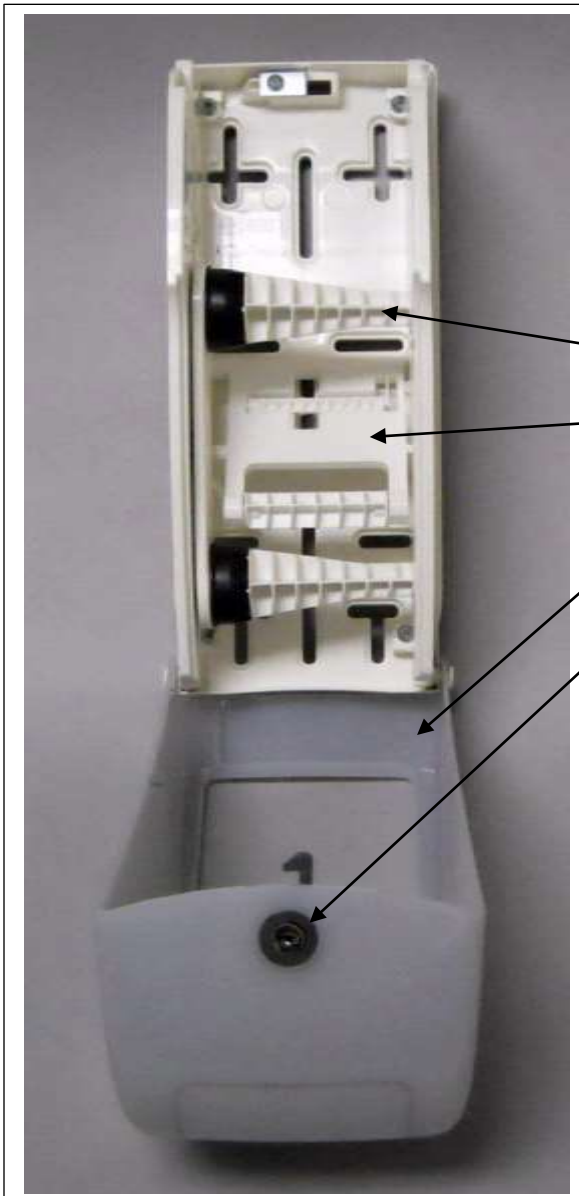
Tork High Capacity Bath Tissue Dispenser:
 T26 System: 555620 (White), 555628 (Black)

Dispenser Dimensions HxWxD Inches (cm):
 14.2 x 6.3 x 6.46 (36.07 x 16.00 x 16.41)

Bath Tissue Product Options:

110292A (Tork Advanced, 2 Ply, 1000 sheets)
 110291A (Tork Advanced, 1 Ply, 2000 sheets)

Dispenser Parts



Part Description Replacement SKU

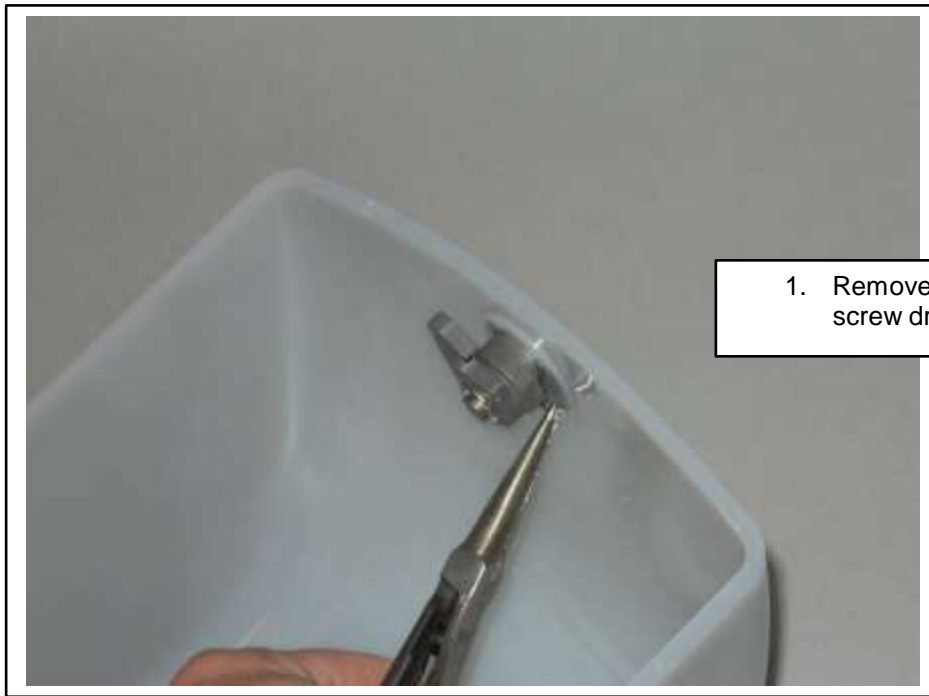
Mandrel/spindle	T26-E2WN Mandrel (White) T26-E2BN Mandrel (Black)
Roll follower	N/A
Hood Assembly Includes: Hood, E-clips (2), Hinge Pins (2)	225566N (White) 225567N (Black)
Tork Lock Assy (Eurolocks)	200262-20
Tork Key	200260 KEY



Part Description with Replacement Instructions

Parts with SKUs listed are available for order as of the revision date on the manual. Contact your sales rep or customer service to order these parts by calling at 1-866-722-8675 and then pressing option 2.

Replacing the Lock:



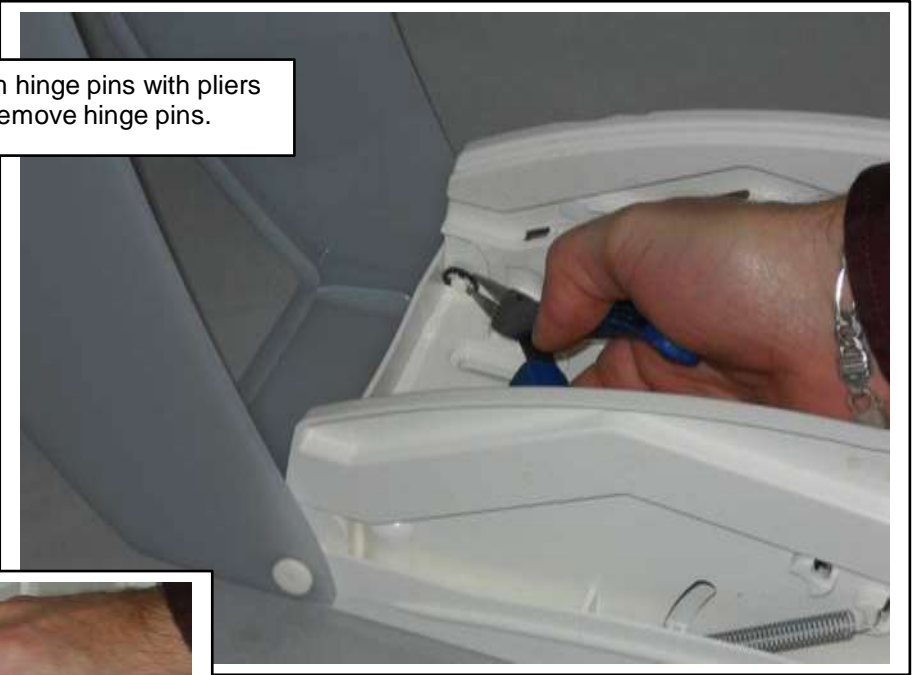
1. Remove the lock retainer clip with pliers or a screw driver and remove the old lock.



2. Insert a new lock (P/N 200262-20) and install retainer clip.

Replacing the Hood Assembly:

1. Remove the "E" clips from hinge pins with pliers or a screw driver. Then remove hinge pins.



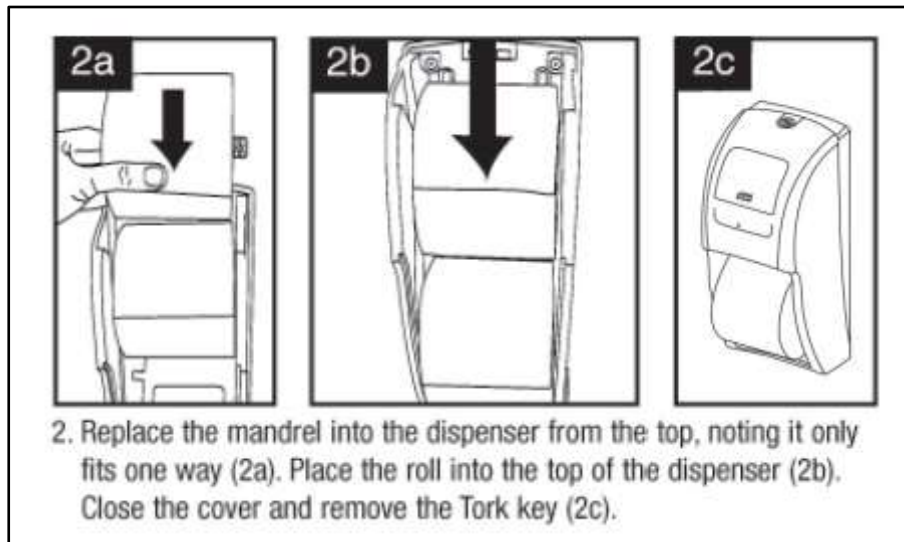
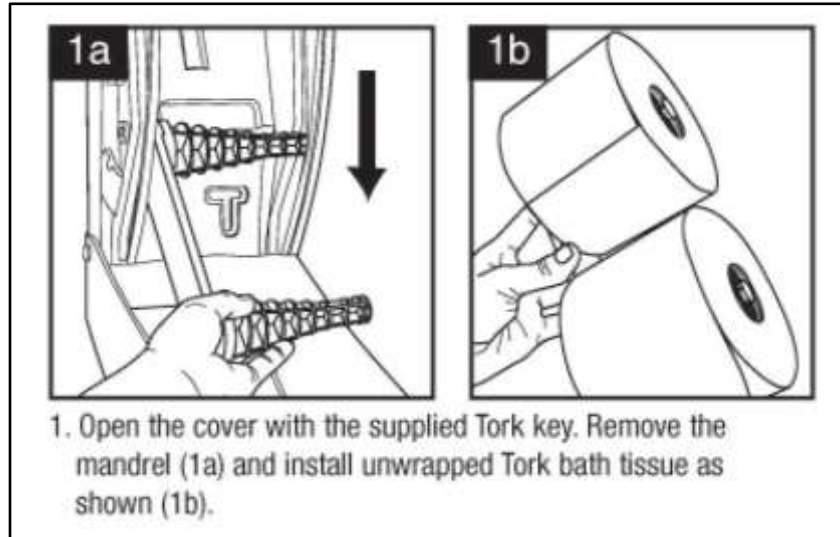
2. Remove hood, replace with new hood, and install hinge pins.



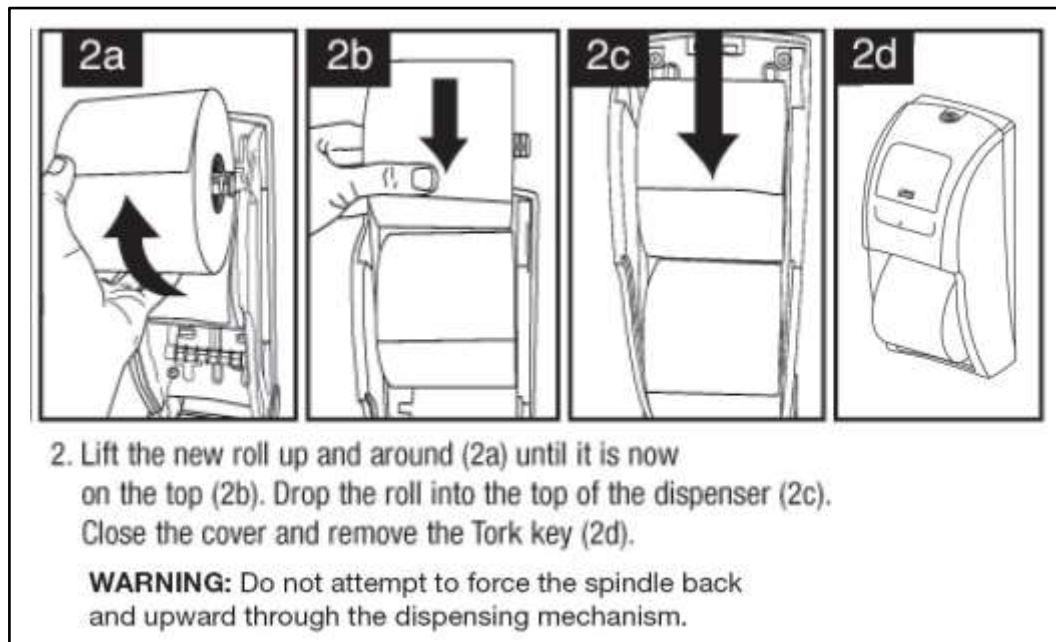
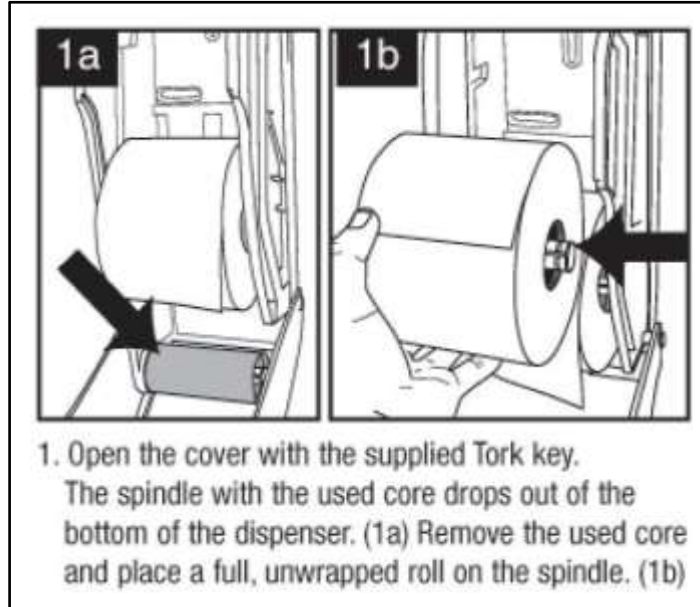
3. Replace "E" clips onto hinge pins.



Filling Instructions



Re-Filling Instructions



Preventive Maintenance

The Tork Bath Tissue dispenser should be cleaned any time there is heavy paper dust build-up inside the dispenser. If paper dust is not a problem, approximately every year is a good frequency for cleanings. The following is the recommended procedure for cleaning:

- 1) Open the dispenser and remove the rolls of paper.
- 2) Clean out any paper dust. This can be done in several ways, such as, vacuuming, blowing out with a can of compressed air (wear safety glasses), wiping out with a damp cloth, etc.
- 3) Clean the cover with a general all-purpose cleaner that is safe for plastics.

Troubleshooting

Problem: Any paper-related problem.

- Take note of the date code on the outside of the case of paper product. Then call Essity at 1-866-722-8675 and then press option 6.

Problem: Any other problem.

- Take note of the date code on the stickers on the inside of the dispenser and then call Essity at 1-866-722-8675 and then press option 6.

Contacting Essity

Before contacting Essity, locate and make note of the date code of the dispenser. The date code for the dispenser will be on a white label on the inside of the hood.



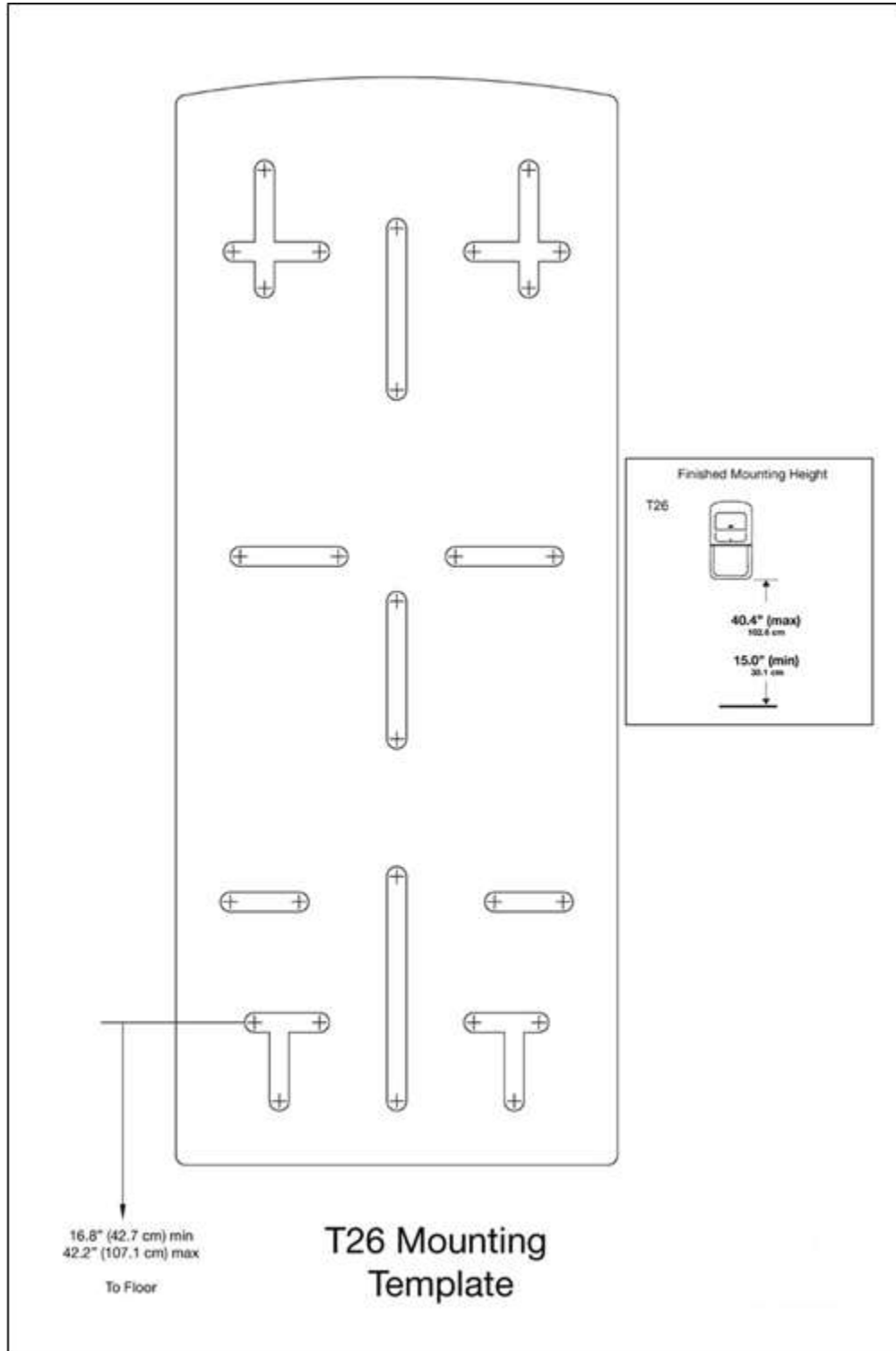
Supply date codes when contacting the Essity Quality Coordinator

Recommended Mounting Height (standard access)

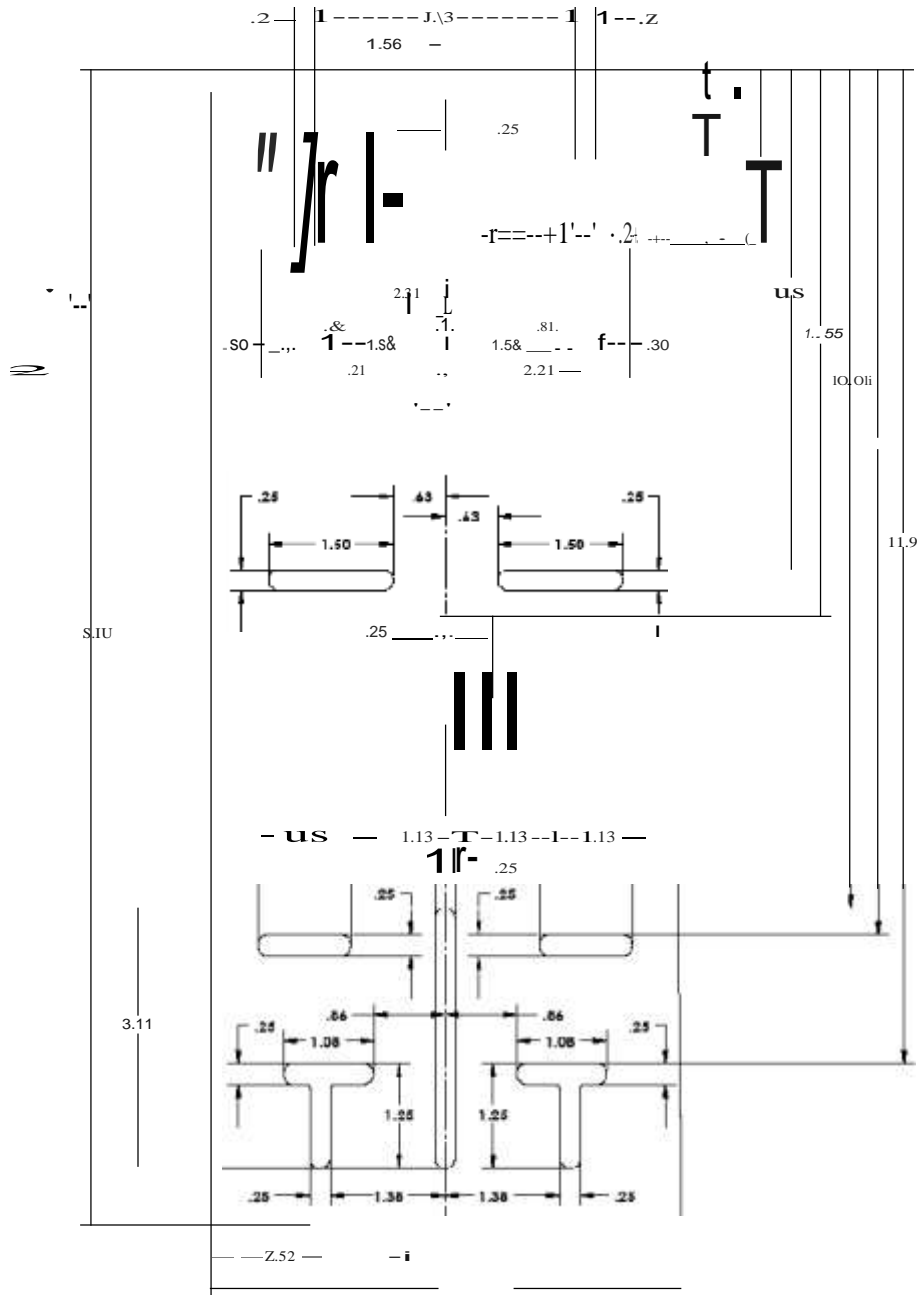
Mount the bottom of the dispenser 27.5" (70cm) above the finished floor for standard access.

Mounting Template

A full sized 11" x 17" copy of the mounting template is included in the original packaging. The image below represents the mounting template. This image is not full size, and should not be used to locate and drill holes.



Tork Elevation High Capacity Bath Tissue Roll Dispenser Backplate Dimensions and Mounting Holes (Not shown full size)



Recommended Mounting Height (ADAAG Guideline)

Toilet Paper Dispensers

604.7 Dispensers. Toilet paper dispensers shall comply with 309.4 and shall be 7 inches (180 mm) minimum and 9 inches (230 mm) maximum in front of the water closet measured to the centerline of the dispenser. The outlet of the dispenser shall be 15 inches (380 mm) minimum and 48 inches (1220 mm) maximum above the finish floor and shall not be located behind grab bars.

Advisory 604.7 Dispensers. If toilet paper dispensers are installed above the side wall grab bar, the outlet of the toilet paper dispenser must be 48 inches (1220 mm) maximum above the finish floor and the top of the gripping surface of the grab bar must be 33 inches (840 mm) minimum and 36 inches (915 mm) maximum above the finish floor.

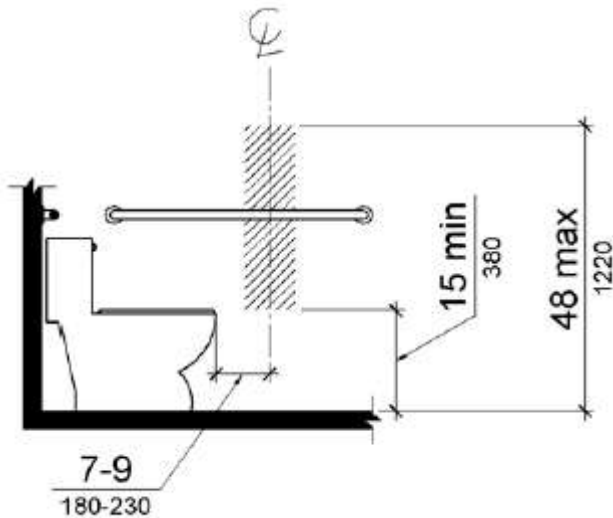


Figure 604.7 Dispenser Outlet Location

Note: Compliance with ADA guidelines is the responsibility of the installer and building owner. Local and state requirements may differ from ADAAG guidelines.